

Manual for Assessing Safety Hardware

Temporary Traffic Control Considerations



Transportation Engineering
and Safety Conference 2018
State College, PA

Question

Approx. how many
PennDOT-approved
Temporary Traffic Control
Products?

150

250

450

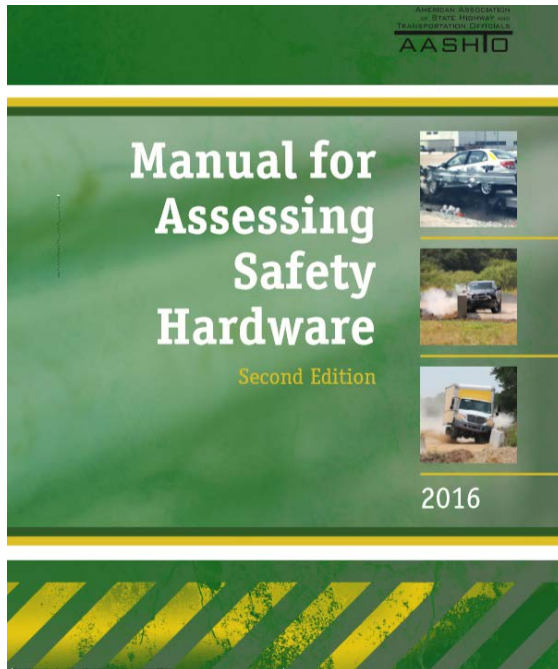
950



Chapter 2

2.2.3 Trailer-Mounted Attenuators and Portable Work Zone Traffic Control Trailers

2.2.4 Support Structures, Work Zone Traffic Control Devices, Breakaway Utility Poles, and Longitudinal Channelizers



MASH 2016

“Temporary work zone devices, including portable barriers, manufactured after December 31, 2019, must have been successfully tested to the 2016 edition of MASH. Such devices manufactured on or before this date, and successfully tested to NCHRP Report 350 or the 2009 edition of MASH, may continue to be used throughout their normal service lives.”

---AASHTO/FHWA Joint Implementation Agreement

CATEGORY 1 DEVICES

Examples: Lightweight devices
such as cones, barrels and
delineators



MASH 2016: 2.2.4: Work Zone Traffic Control Devices

CATEGORY 1 DEVICES

May 9, 2018 Clarifications by
AASHTO and FHWA:

Manufacturer-certification for MASH
2016 compliance is acceptable*

*With attachments, like warning lights, additional
testing or engineering analyses may be warranted



CATEGORY 2 DEVICES

Examples: Barricades, vertical panels, portable sign stands



MASH 2016: 2.2.4: Work Zone Traffic Control Devices

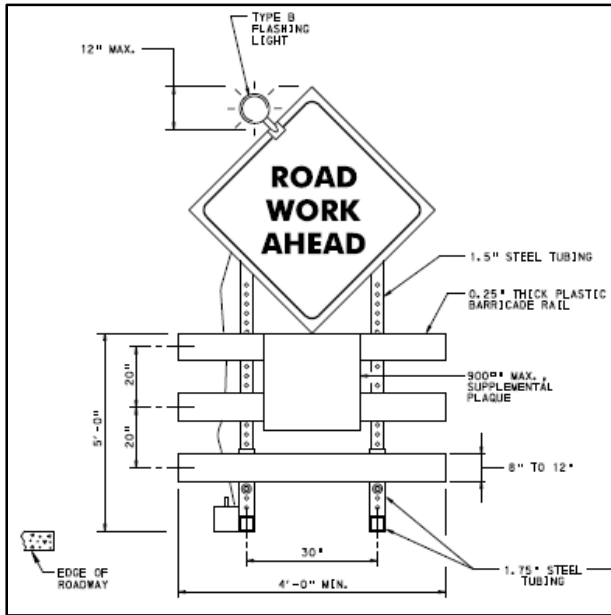
CATEGORY 2 DEVICES

May 9, 2018 Clarifications by
AASHTO and FHWA:

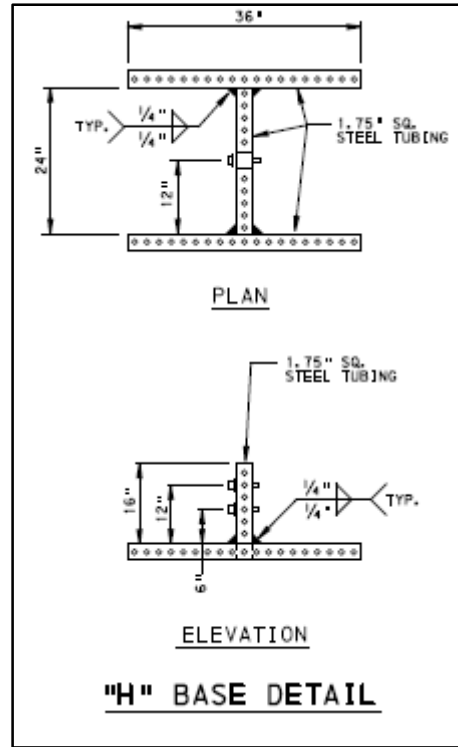
- Two tests in one run
- Rear window damage
- Floor board penetration
- Mounting in paved surfaces



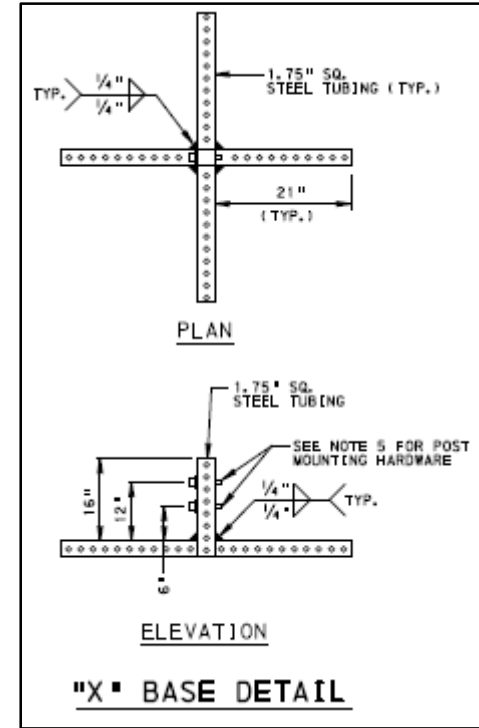
CATEGORY 2 DEVICES



PA Type 3
Barricade



H Base
Sign Support



X Base
Sign Support

CATEGORY 3 DEVICES

Examples: Concrete, steel and water-filled temporary barriers, temporary attenuators,



MASH 2016: 2.2.4: Work Zone Traffic Control Devices

CATEGORY 3 DEVICES

Examples: Concrete, steel and water-filled temporary barriers, temporary attenuators,



Currently under consideration:
3-Year Phase Out; 12/31/2021

CATEGORY 4 DEVICES

Portable WZ Traffic Control Trailers: e.g. TMA, Portable DMS, Temporary Signals, Camera Trailers



Reference: MASH 2016: 2.2.3

TEMPORARY TRAFFIC CONTROL DEVICES

Portable WZ Traffic Control Trailers: e.g. TMA, portable DMS, temporary signals, camera trailers



May be necessary in some instances to shield or otherwise make crashworthy

MASH Temporary Traffic Control

Questions?



Jason C. Bewley, P.E.
jbewley@pa.gov